



SPEECH SERVICES SYDNEY & COAST

Language Development

Pragmatic Language (social skills)

Pragmatic language refers to the social language skills we use in our everyday interactions. This includes what we say and how we say it using body language, eye contact, facial expressions gestures.

As children grow and learn from the world around them, they develop language skills to help them both **understand others** and to **say their thoughts and feelings**. They also develop their ability to judge what can and cannot be said in different situations.

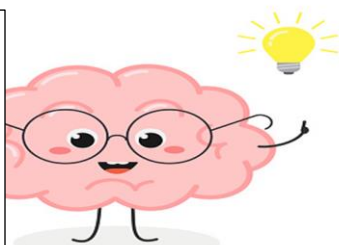
Receptive Language (listening skills)

The first to develop, receptive language is the ability to listen to and understand speech. This includes understanding sentences, following instructions, and understanding a story.

Expressive Language (speaking skills)

Expressive language includes our ability to say words, sentences and stories. It includes the words we use (vocabulary) and how we put those words together (grammar, length of sentence).

"If you have concerns about how well your child can understand or share ideas with you contact a Speech Pathologist."



PH: (02) 97902324

A: U3/14-16 Myrtle St Rydalmere NSW 2116

E: info@sssandc.com.au

W: www.sssandc.com.au